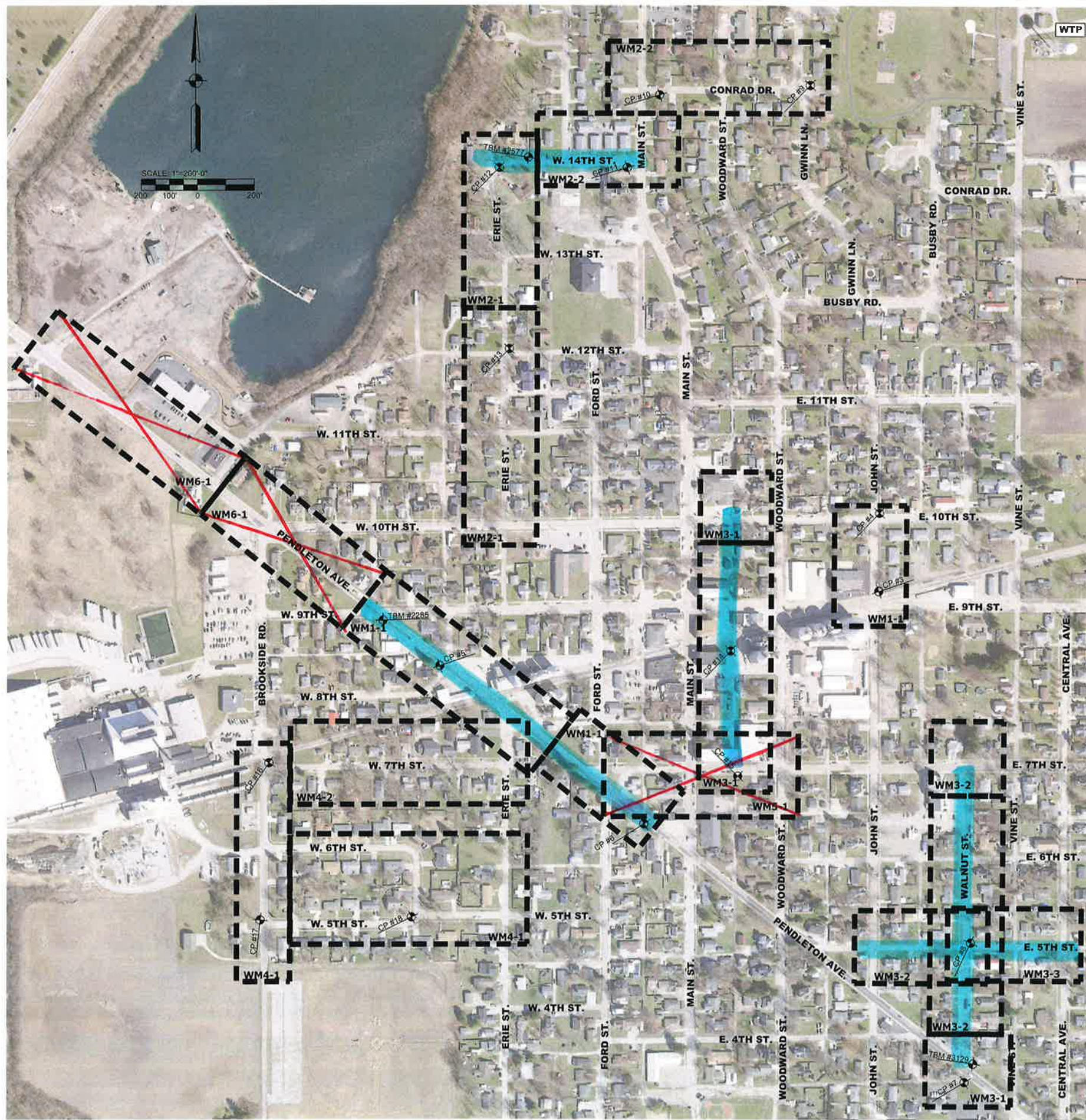
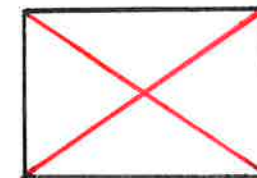


File G CLIENTS A LAPELO W2074 WATER UTILITY IMPROVEMENTS DIVISION B - WATER DISTRIBUTION W2074 GENERAL NOTES ABBREVIATIONS AND SYMBOLS DWG 8/16/2021 11:46:52 AM Plotted 8/16/2021 11:48:27 AM. Current User: George Rader.



SURVEY INFORMATION				
IDENTIFIER	NORTH COORDINATE	EAST COORDINATE	ELEVATION	DESCRIPTION
CP #3	1755763.44	277974.12		CP/CAPPED REBAR
CP #4	1756040.60	277975.28		CP/CAPPED REBAR
CP #5	1755496.88	276420.49		CP/CAPPED REBAR
CP #6	1754939.09	277143.84		CP/CAPPED REBAR
CP #7	1754031.53	278291.26		CP/CAPPED REBAR
CP #8	1754523.03	278310.18		CP/CAPPED REBAR
CP #9	1757554.54	277720.95		CP/CAPPED REBAR
CP #10	1757518.87	277186.74		CP/CAPPED REBAR
CP #11	1757260.44	277074.53		CP/CAPPED REBAR
CP #12	1757259.36	276624.48		CP/CAPPED REBAR
CP #13	1756618.01	276661.63		CP/CAPPED REBAR
CP #14	1755550.79	277451.05		CP/MAG SPIKE
CP #15	1755108.26	277479.13		CP/CAPPED REBAR
CP #16	1755154.45	275817.55		CP/CAPPED REBAR
CP #17	1754599.9820	275786.94		CP/CAPPED REBAR
CP #18	1754609.89	276322.91		CP/CAPPED REBAR
TBM #2285	1755659	276201	852.86	CUT "X" S. BONNET BOLT OF FIRE HYDRANT
TBM #2577	1757296	276726	850.23	CUT "X" N. BONNET BOLT OF FIRE HYDRANT
TBM #3129	1754096	276322	863.61	CUT "X" NE. BONNET BOLT OF FIRE HYDRANT

Project coordinates are based on the following:
 HORIZONTAL-US State plane coordinates: NAD83 (North American Datum) Indiana East Zone (1301)
 VERTICAL-USGS 1988 NAVD (North American Vertical Datum)



NOT INCLUDED
IN CURRENT CONTRACT



COMPLETED

COMMONWEALTH ENGINEERS, INC.
 104 N. Main St.
 Crown Point, IN 46307
 (219) 909-9177

7385 Conaway Dr.
 Indianapolis, IN 46237
 (317) 888-1177

9904 Colwater Rd.
 Evansville, IN 47619
 (812) 474-1177

Sarah Priddy
 No. 11900794
 STATE OF INDIANA
 PROFESSIONAL ENGINEER
 8-3-2021
 Signature Date

TOWN OF LAPEL
 MADISON COUNTY, INDIANA
 WATER UTILITY
 IMPROVEMENTS PROJECT
 DIVISION "B" - DISTRIBUTION
 SYSTEM IMPROVEMENTS

© 2020 BY COMMONWEALTH ENGINEERS, INC. ALL RIGHTS RESERVED. REPRODUCTION BY ANY METHOD WITHOUT WRITTEN PERMISSION IS PROHIBITED.

Indiana 811
 Home with Indiana
 Call before you dig
 OR 1-800-582-5644
 (ITS THE LAW)

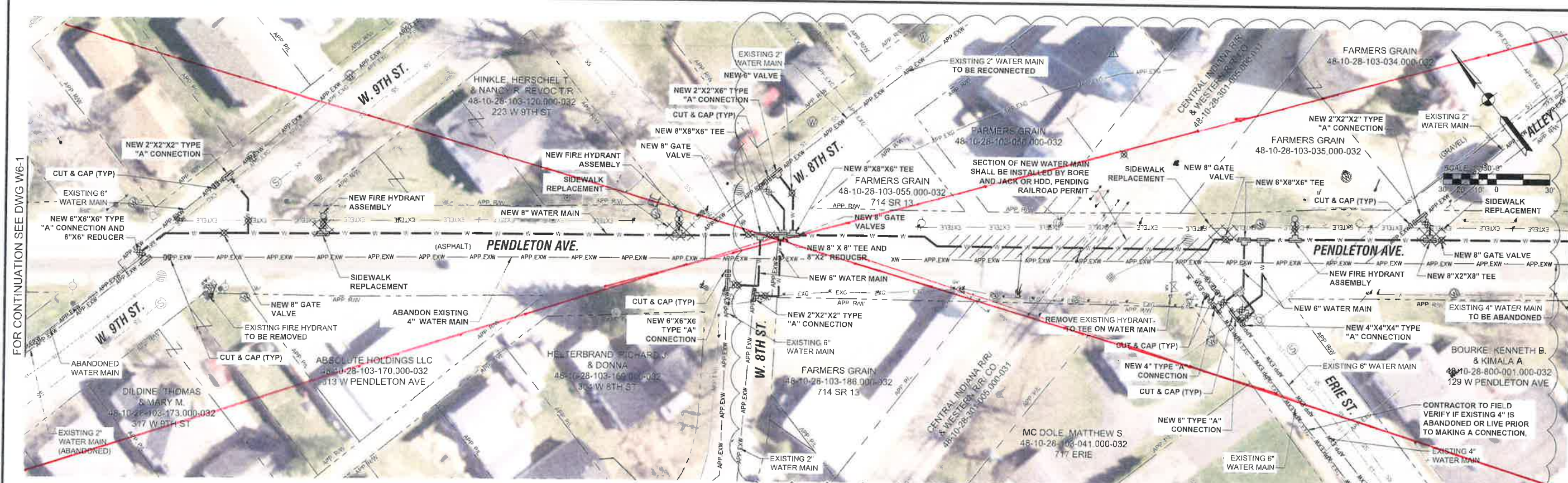
No.	Submittal/Revision	By	Date

Designed By: SEP	Drawn By: NMB	Checked By: RMB
Issue Date: 8/3/21	Project No: W2074	Scale: AS SHOWN

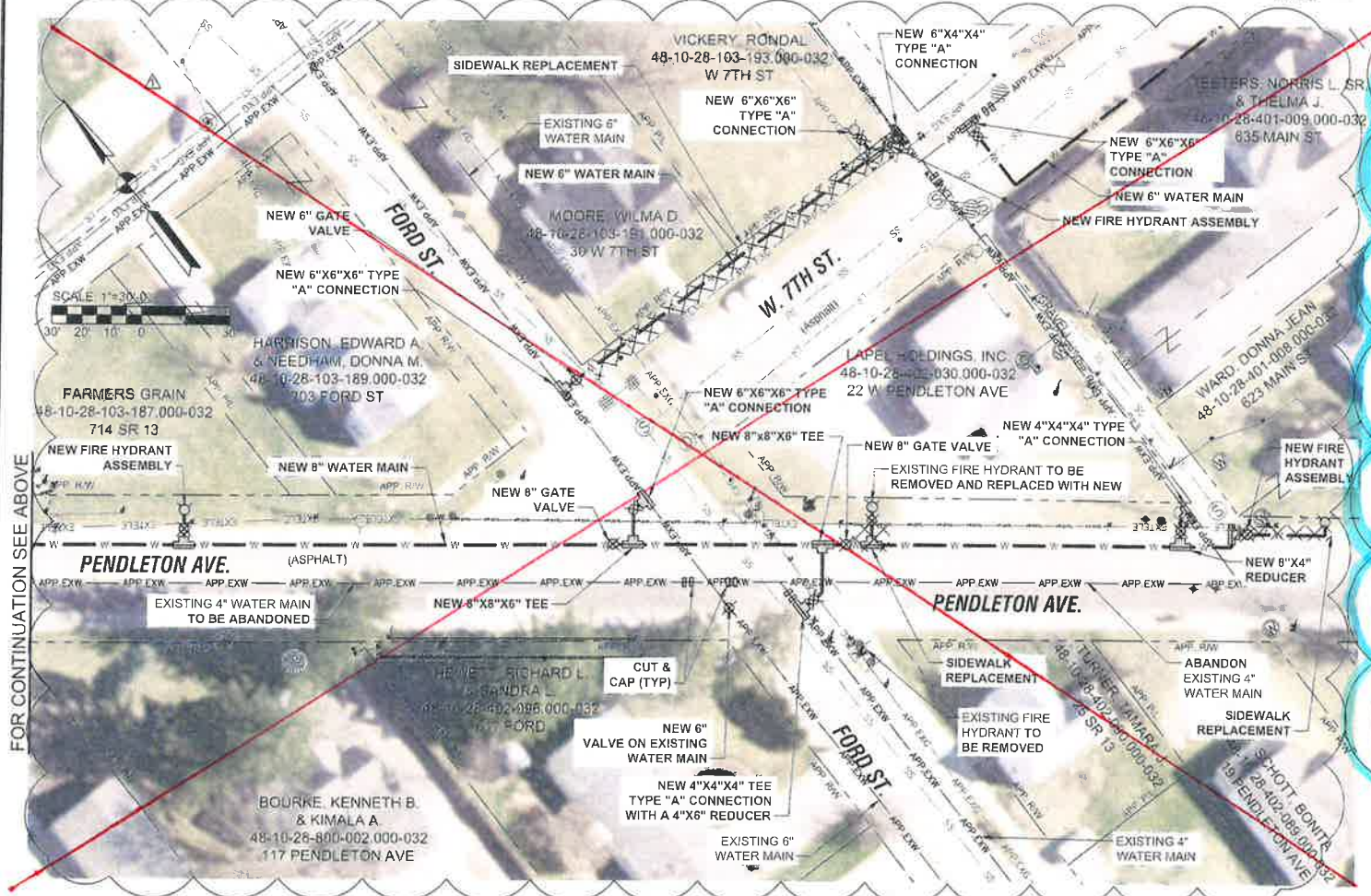
SURVEY DATA TABLE

Drawing No:
G4

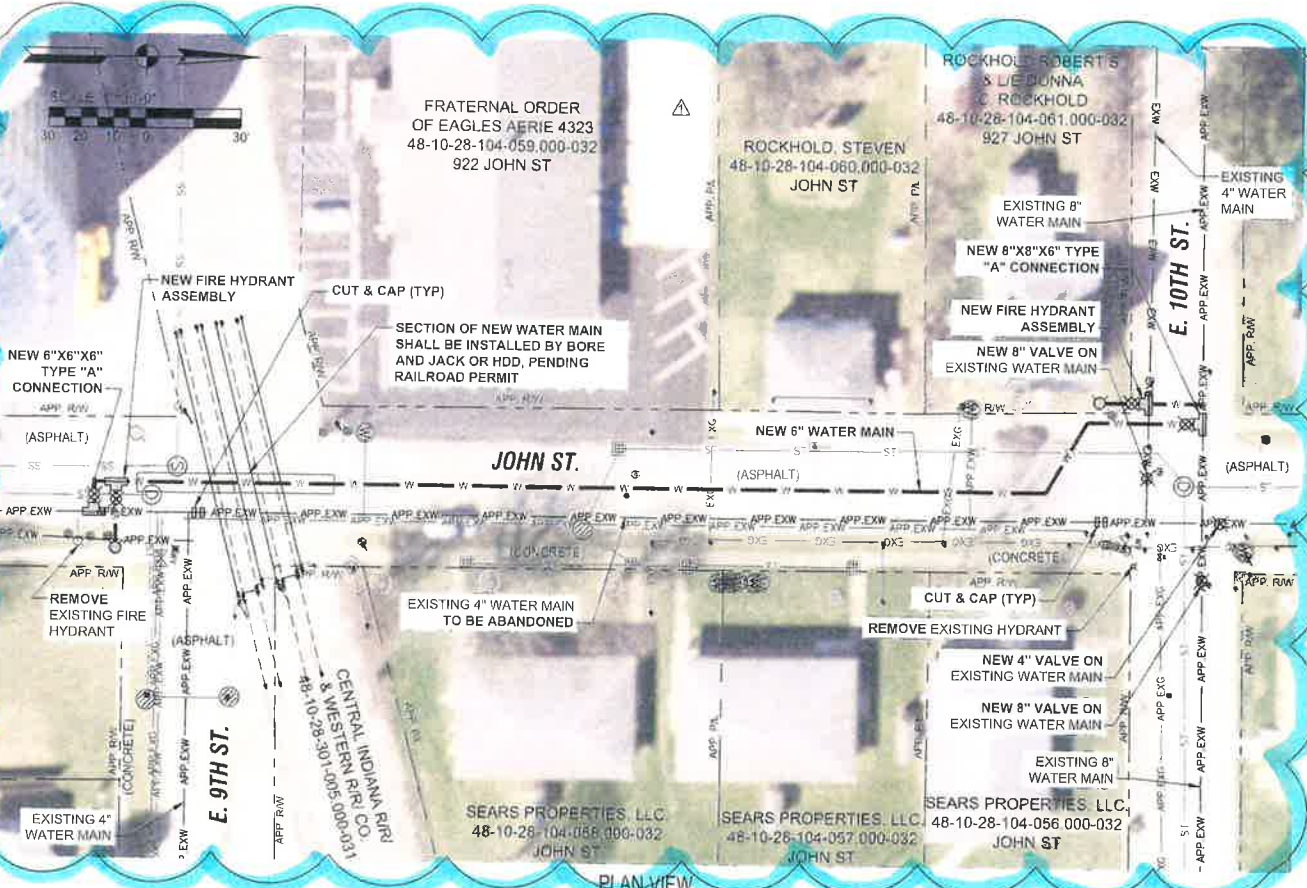
Sheet: 04 OF 18



PLAN VIEW
SCALE: 1"=30'



PLAN VIEW
SCALE: 1"=30'



PLAN VIEW
SCALE: 1"=30'

GENERAL NOTES

1. WITH THE EXCEPTION OF THE RAILROAD CROSSING, THE WATER MAIN SHALL BE INSTALLED VIA OPEN CUT METHOD, BACKFILLED WITH FLOWABLE FILL TO GRADE.
2. ALL SERVICES CONNECTED TO WATER MAIN BEING ABANDONED ARE TO BE RECONNECTED TO THE NEW WATER MAIN. WATER METERS IDENTIFIED DURING SURVEY ARE SHOWN ON THE PLANS. CONTRACTOR TO FIELD VERIFY NUMBER OF CONNECTIONS. ALL ASSOCIATED SERVICE LINES ARE TO BE REPLACED FROM THE WATER METER TO THE NEW WATER MAIN.
3. ALL REMOVED HYDRANTS TO BE PROVIDED TO OWNER.

FOR CONTINUATION SEE DWG W6-1

FOR CONTINUATION SEE BELOW

COMMONWEALTH ENGINEERS, INC.
 7056 Columbia Dr.
 Indianapolis, IN 46237
 (317) 886-1177

151 N. Main St.
 Columbus, IN 47337
 (317) 900-9177

9604 Colwater Rd.
 Boone, IN 48965
 (260) 454-3223

420 NW 9th St., #201
 Fort Wayne, IN 46825
 (317) 747-1177

SARAH E. PRIZIO
 No. 11900794
 STATE OF INDIANA
 PROFESSIONAL ENGINEER

Sarah E. Prizio
 Signature

8-3-2021
 Date

**TOWN OF LAPEL
 MADISON COUNTY, INDIANA**

**WATER UTILITY
 IMPROVEMENTS PROJECT**

**DIVISION "B" - DISTRIBUTION
 SYSTEM IMPROVEMENTS**

© 2020 BY COMMONWEALTH ENGINEERS, INC. ALL RIGHTS RESERVED. REPRODUCTION BY ANY METHOD IN WHOLE OR IN PART WITHOUT PERMISSION IS PROHIBITED.

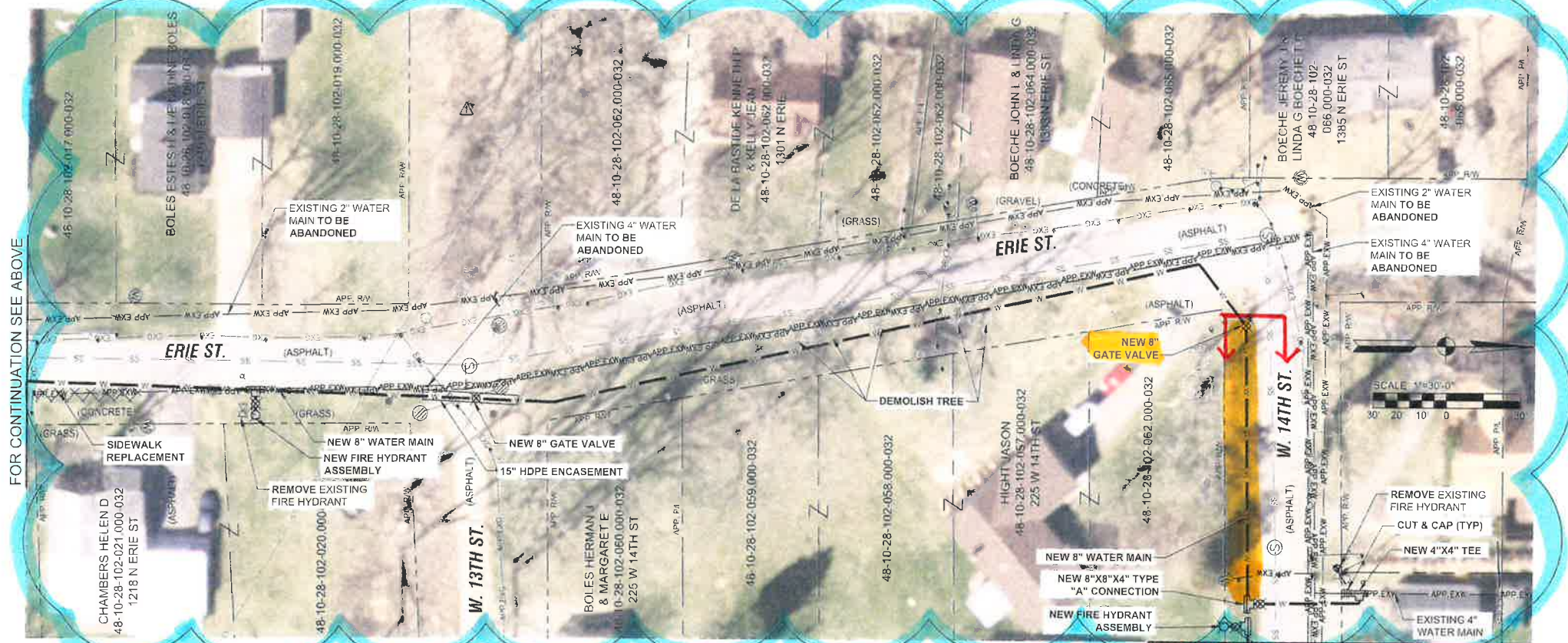
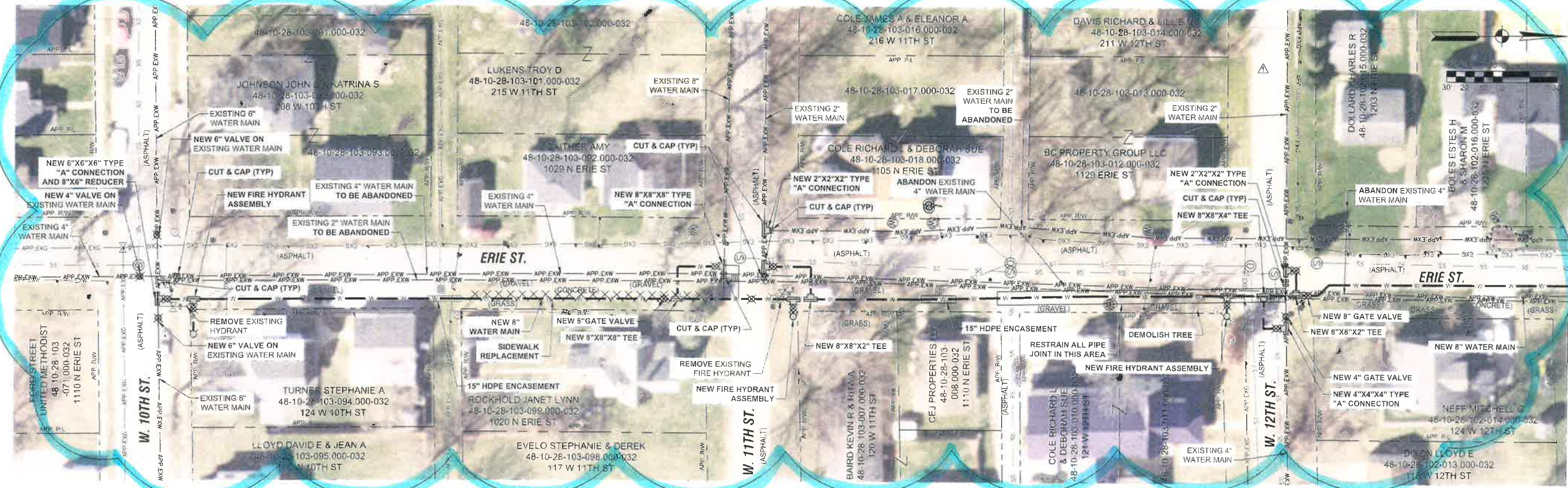
Indiana 811
 www.in.gov/811
 OR 1-800-382-5544
 (IT'S THE LAW)

No.	Submittal / Revision	Date
1	ADDENDUM B-4	08/13/2021

Designed By:	Drawn By:	Checked By:
SEP	NMB	RMB
Issue Date:	Project No:	Scale:
8/3/2021	W20074	AS SHOWN

NEW WATER MAIN PLAN VIEW

File: G:\CLIENTS\LAPEL\2021\WATER UTILITY\MP\06\CD\04\CURRENT FILES\DRAWINGS\DIVISION B - WATER DISTRIBUTION\PLAN VIEWS\DIV B.W6.DWG
 Saved: 8/13/2021 5:21:04 PM
 User: Andrew.Huffield



GENERAL NOTES

1. WITH THE EXCEPTION OF THE RAILROAD CROSSING, THE WATER MAIN SHALL BE INSTALLED VIA OPEN CUT METHOD, BACKFILLED WITH FLOWABLE FILL TO GRADE.
2. ALL SERVICES CONNECTED TO WATER MAIN BEING ABANDONED ARE TO BE RECONNECTED TO THE NEW WATER MAIN. WATER METERS IDENTIFIED DURING SURVEY ARE SHOWN ON THE PLANS. CONTRACTOR TO FIELD VERIFY NUMBER OF CONNECTIONS. ALL ASSOCIATED SERVICE LINES ARE TO BE REPLACED FROM THE WATER METER TO THE NEW WATER MAIN.
3. ALL REMOVED HYDRANTS TO BE PROVIDED TO OWNER.
4. CONTRACTOR TO CONFIRM CONNECTION OF 4" TO 2" AT THE INTERSECTION OF W 12 ST AND ERIE ST PRIOR TO INSTALLING ANY CONNECTIONS.

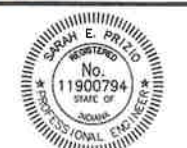
FOR CONTINUATION SEE BELOW

COMMONWEALTH ENGINEERS, INC.
100 N. Main St.
Crown Point, IN 46307
(317) 830-1177

2580 Columbia Dr.
Indianapolis, IN 46257
(317) 898-1177

906 Caldwell Rd.
Fort Wayne, IN 46825
(317) 891-3225

408 W. 8th St.
Evansville, IN 47710
(812) 474-1177



Sarah E. Prieled
Signature

8-3-2021
Date

**TOWN OF LAPEL
MADISON COUNTY, INDIANA
WATER UTILITY
IMPROVEMENTS PROJECT
DIVISION "B" - DISTRIBUTION
SYSTEM IMPROVEMENTS**

DO NOT REPRODUCE OR TRANSMIT THIS INFORMATION IN ANY MANNER WITHOUT THE WRITTEN PERMISSION OF COMMONWEALTH ENGINEERS, INC.

Indiana 811
Know what's below. Call before you dig.
OR 1-800-382-5544
(IT'S THE LAW)

No.	Revised/Revised By	Date

Designed By: SEP
Drawn By: NMB
Checked By: RMB

Issue Date: 8/3/2021
Project No: W20074
Scale: AS SHOWN

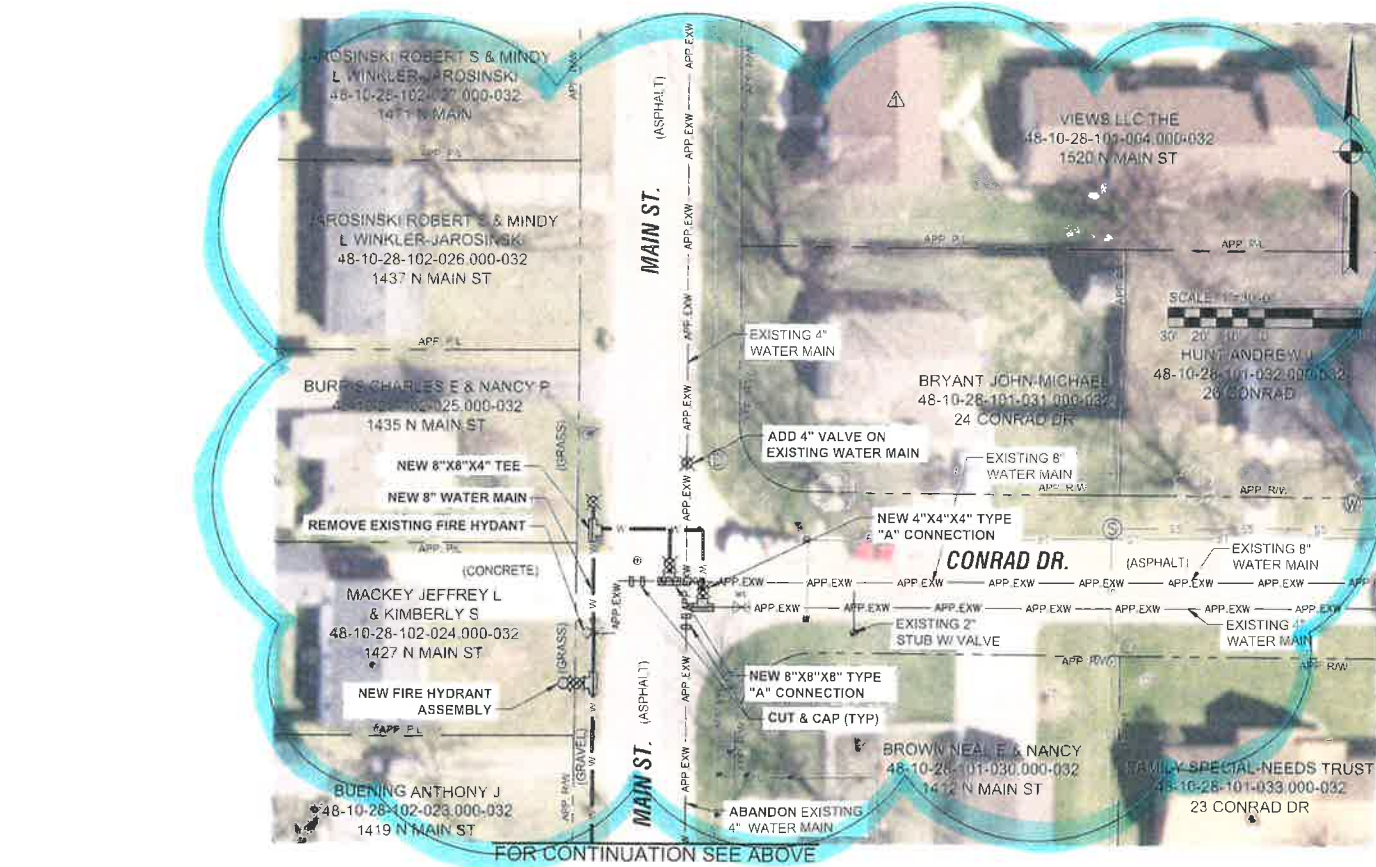
NEW WATER MAIN
PLAN VIEW

Drawing No:
WM2-1

Sheet 07 OF 18



PLAN VIEW
SCALE: 1"=30'




PLAN VIEW
SCALE: 1"=30'


GENERAL NOTES

1. WITH THE EXCEPTION OF THE RAILROAD CROSSING, THE WATER MAIN SHALL BE INSTALLED VIA OPEN CUT METHOD, BACKFILLED WITH FLOWABLE FILL TO GRADE.
2. ALL SERVICES CONNECTED TO WATER MAIN BEING ABANDONED ARE TO BE RECONNECTED TO THE NEW WATER MAIN. WATER METERS IDENTIFIED DURING SURVEY ARE SHOWN ON THE PLANS. CONTRACTOR TO FIELD VERIFY NUMBER OF CONNECTIONS. ALL ASSOCIATED SERVICE LINES ARE TO BE REPLACED FROM THE WATER METER TO THE NEW WATER MAIN.
3. ALL REMOVED HYDRANTS TO BE PROVIDED TO OWNER

PL: C:\ENVS\3\LOCAL\DWG\WATER\UTILITY\WATER\WATER DISTRIBUTION\WATER DISTRIBUTION PLAN VIEWS\DW B.DWG
 Saved: 20/03/2021 12:21:00 PM
 Project: W20074
 User: jacob

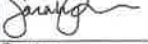


COMMONWEALTH ENGINEERS, INC.
 7266 Crossway Dr.
 Indianapolis, IN 46257
 (317) 488-1177




Sarah E. Priolo
 No. 11900794
 State of IN
 PROFESSIONAL ENGINEER

604 Caldwel Rd.
 State IN 46206
 (260) 194-9223

Signature:  Date: 8-3-2021

**TOWN OF LAPEL
 MADISON COUNTY, INDIANA
 WATER UTILITY
 IMPROVEMENTS PROJECT
 DIVISION "B" - DISTRIBUTION
 SYSTEM IMPROVEMENTS**

2020 BY COMMONWEALTH ENGINEERS, INC. ALL RIGHTS RESERVED. REPRODUCTION BY ANY MEANS WITHOUT PERMISSION IS PROHIBITED.



OR 1-800-382-5544
 (IT'S THE LAW)

No.	Revisions	By	Date

Designed By: SEP

Issue Date: 8/3/2021

Drawn By: NMB

Project No: W20074

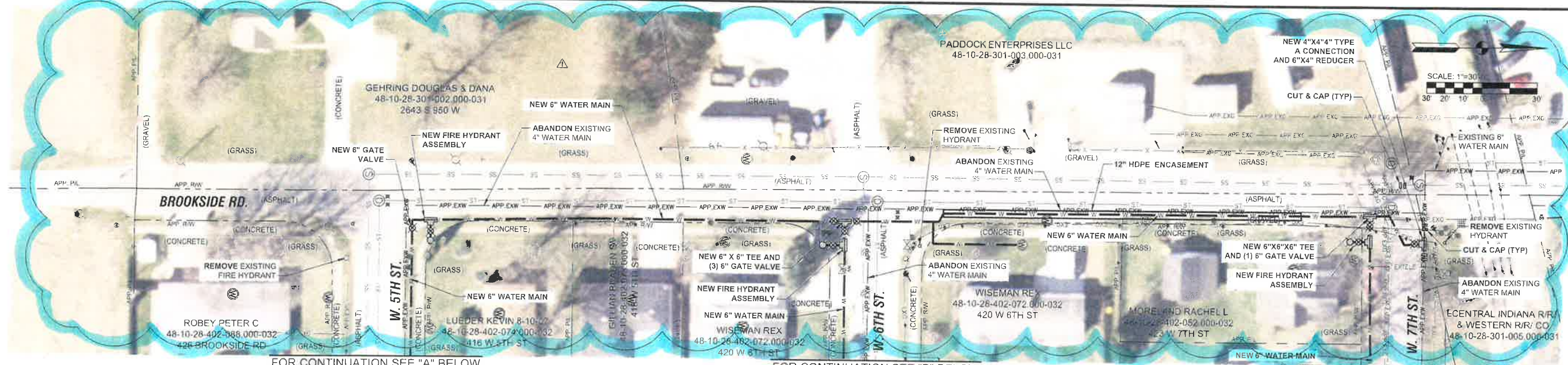
Checked By: RMB

Scale: AS SHOWN

NEW WATER MAIN PLAN VIEW

Drawing No: **WM2-2**

Sheet: 08 OF 18

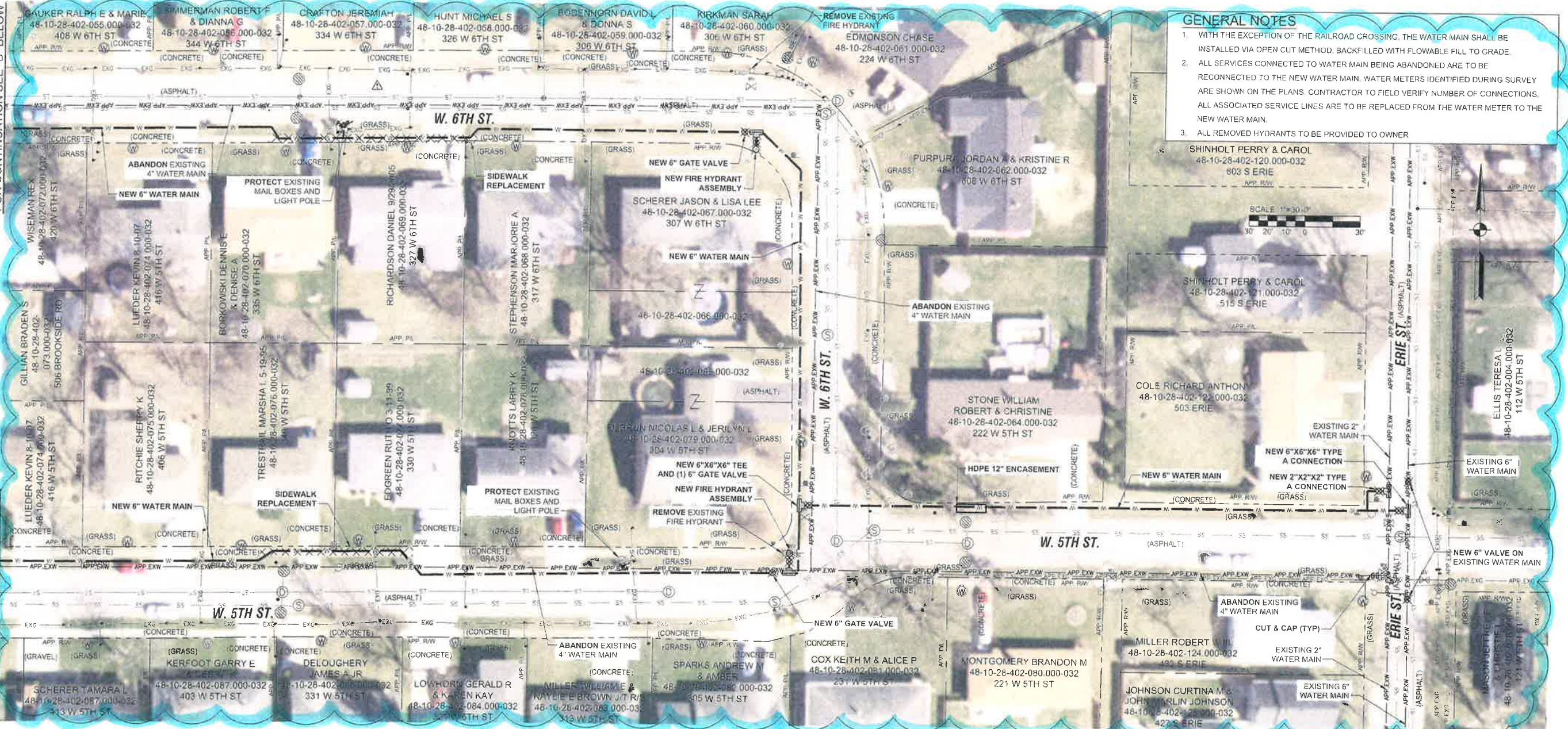


FOR CONTINUATION SEE "A" BELOW

FOR CONTINUATION SEE "B" BELOW

FOR CONTINUATION SEE DWG W4-2

PLAN VIEW
SCALE: 1"=30'



GENERAL NOTES

1. WITH THE EXCEPTION OF THE RAILROAD CROSSING, THE WATER MAIN SHALL BE INSTALLED VIA OPEN CUT METHOD, BACKFILLED WITH FLOWABLE FILL TO GRADE.
2. ALL SERVICES CONNECTED TO WATER MAIN BEING ABANDONED ARE TO BE RECONNECTED TO THE NEW WATER MAIN. WATER METERS IDENTIFIED DURING SURVEY ARE SHOWN ON THE PLANS. CONTRACTOR TO FIELD VERIFY NUMBER OF CONNECTIONS. ALL ASSOCIATED SERVICE LINES ARE TO BE REPLACED FROM THE WATER METER TO THE NEW WATER MAIN.
3. ALL REMOVED HYDRANTS TO BE PROVIDED TO OWNER.

PLAN VIEW
SCALE: 1"=30'

COMMONWEALTH ENGINEERS, INC.
 7256 Company Dr.
 Indianapolis, IN 46226
 (317) 888-1177

101 N. Main St.
 Columbus, IN 47332
 (317) 908-8177

9604 Colowater Rd.
 Suite 203
 Fort Wayne, IN 46825
 (260) 994-3223

420 NW 9th St. #201
 Evansville, IN 47710
 (812) 424-1176

ASH E. PHILIP
 No. 11900794
 STATE OF INDIANA
 PROFESSIONAL ENGINEER

Signature

8-3-2021
 Date

**TOWN OF LAPEL
 MADISON COUNTY, INDIANA
 WATER UTILITY
 IMPROVEMENTS PROJECT
 DIVISION "B" - DISTRIBUTION
 SYSTEM IMPROVEMENTS**

© 2021 BY COMMONWEALTH ENGINEERS, INC. ALL RIGHTS RESERVED. REPRODUCTION BY ANY METHOD IN WHOLE OR IN PART WITHOUT PERMISSION IS PROHIBITED.

Indiana 811
 Know your location. Call before you dig.
 OR 1-800-392-5544
 (IT'S THE LAW)

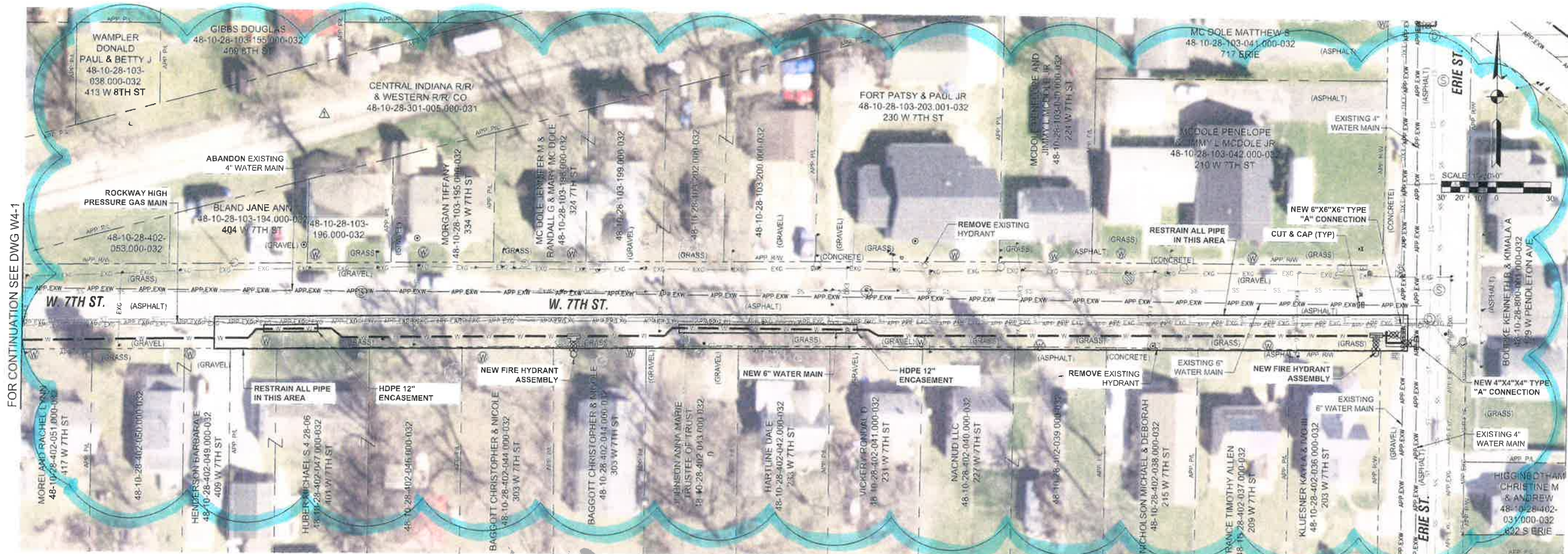
No.	Date	By	Checked/Revised
1	08/03/2021	ACH	

Designed By:	SEP	Drawn By:	NMB	Checked By:	RMB
Issue Date:	8/3/2021	Project No:	W20074	Scale:	AS SHOWN

NEW WATER MAIN PLAN VIEW

Drawing No:
WM4-1

P:\G\CLIENTS\LAPEL\WATER UTILITY IMPROVEMENTS\CURRENT FILES\DRAWINGS\DWG\PLAN VIEW\DWG
 Scale: 9/13/2021 8:11 AM RUP: [unclear] 9/13/2021 5:27:01 PM. Content User: [unclear]



PLAN VIEW
 SCALE: 1"=30'

FOR CONTINUATION SEE DWG W4-1

GENERAL NOTES

1. WITH THE EXCEPTION OF THE RAILROAD CROSSING, THE WATER MAIN SHALL BE INSTALLED VIA OPEN CUT METHOD. BACKFILLED WITH FLOWABLE FILL TO GRADE.
2. ALL SERVICES CONNECTED TO WATER MAIN BEING ABANDONED ARE TO BE RECONNECTED TO THE NEW WATER MAIN. WATER METERS IDENTIFIED DURING SURVEY ARE SHOWN ON THE PLANS. CONTRACTOR TO FIELD VERIFY NUMBER OF CONNECTIONS. ALL ASSOCIATED SERVICE LINES ARE TO BE REPLACED FROM THE WATER METER TO THE NEW WATER MAIN.
3. ALL REMOVED HYDRANTS TO BE PROVIDED TO OWNER

COMMONWEALTH ENGINEERS, INC.
 1st Fl. Main St.
 7556 Community Center
 Indianapolis, IN 46251
 (317) 888-1177
 9804 Cedarwaf Rd.
 Suite 203
 Fort Val, IN 46825
 (260) 484-3223
 420 NW 9th St #201
 Fort Val, IN 46825
 (260) 484-1177

Professional Engineer
 No. 11900794
 State of Indiana
 Signature: *Joseph*
 Date: 8-3-2021

**TOWN OF LAPEL
 MADISON COUNTY, INDIANA
 WATER UTILITY
 IMPROVEMENTS PROJECT
 DIVISION "B" - DISTRIBUTION
 SYSTEM IMPROVEMENTS**

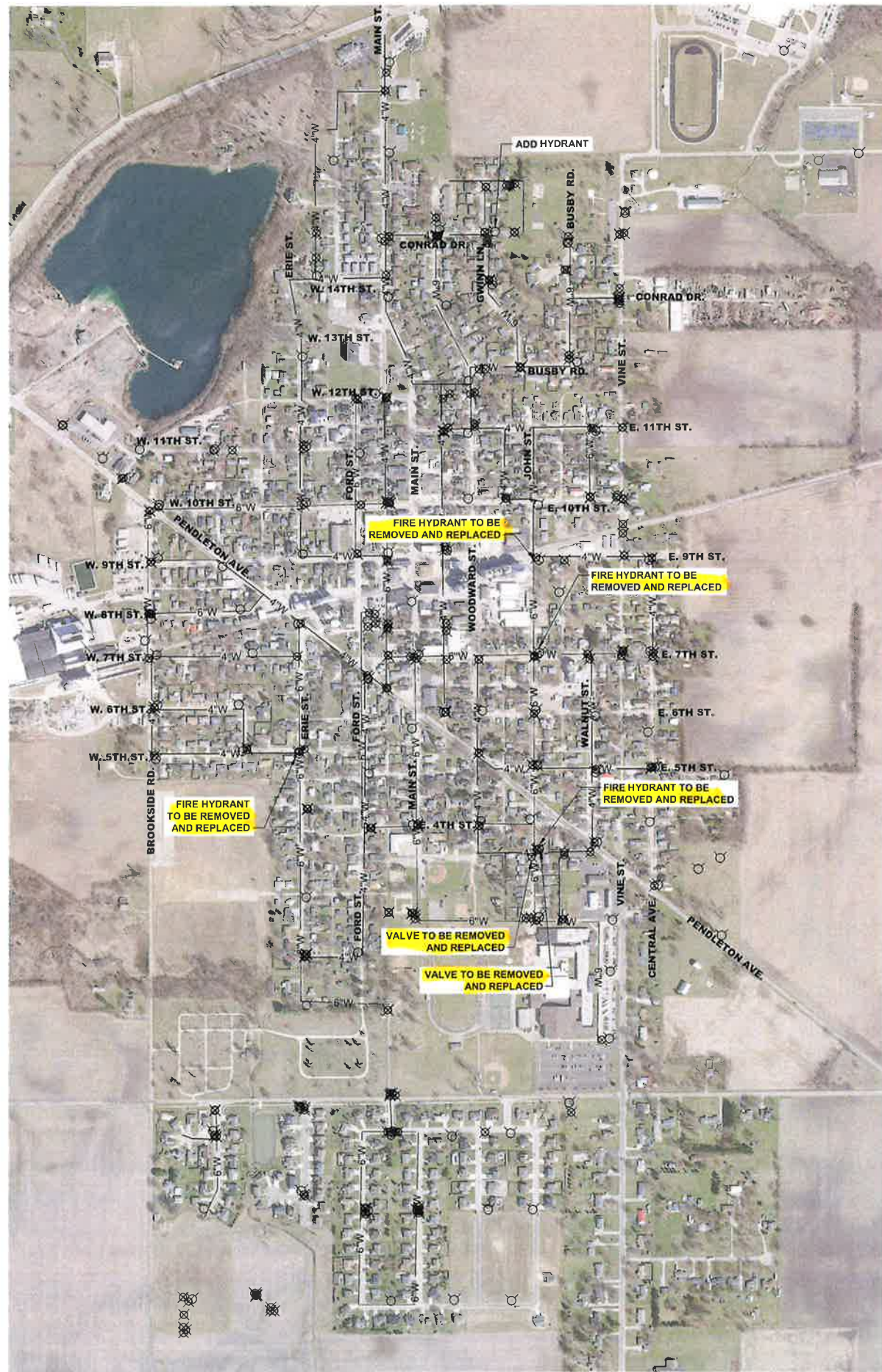
© 2021 BY COMMONWEALTH ENGINEERS, INC. ALL RIGHTS RESERVED. REPRODUCTION BY ANY METHOD IN WHOLE OR IN PART WITHOUT PERMISSION IS PROHIBITED.

 OR 1-800-382-5544
 (IT'S THE LAW)

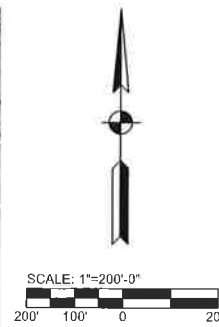
No.	Submitted / Revision	By	Date
1.	ADDENDUM #4	ACH	01/3/2021

Designed By: SEP
 Drawn By: NMB
 Checked By: RMB
 Issue Date: 8/3/2021
 Project No: W20074
 Scale: AS SHOWN

NEW WATER MAIN PLAN VIEW
 Drawing No: **WM4-2**
 Sheet: 13 OF 18



PROJECT LOCATION MAP
SCALE: 1"=200'



LEGEND:

- 4"W — - EXISTING 4" WATER MAIN
- 6"W — - EXISTING 6" WATER MAIN
- ⊗ - EXISTING FIRE HYDRANT
- ⊗ - EXISTING VALVE

GENERAL NOTES:

- CONTRACTOR TO LOCATE ALL EXISTING CUSTOMER WATER METERS AND REPLACE PER SPECIFICATIONS
- IN THE AREAS WHERE WATER MAIN IS BEING REPLACED AND ABANDONED, CONTRACTOR TO RECONNECT ALL SERVICES FROM THE ABANDONED WATER MAINS TO THE NEW 8" AND 6" WATER MAINS AND REPLACE THE LENGTH OF SERVICE LINE FROM THE CUSTOMER METER AND/OR RIGHT OF WAY PER SPECIFICATION.

VALVE AND HYDRANT REPLACEMENT TABLE	
VALVE LOCATIONS	VALVE SIZE
3RD STREET EAST OF MAIN ON JOHN STREET	4"
JOHN STREET SOUTH OF MAIN ON 3RD STREET	6"
HYDRANT LOCATIONS	HYDRANT SIZE
JOHN STREET AND EAST 9TH	4"
JOHN STREET AND EAST 7TH	6"
ERIE STREET AND WEST 5TH	6"
CONRAD DR AND GWINN LN	6"
JOHN STREET AND EAST 3RD ST	6"

NOT COMPLETED (Yellow highlight)

COMPLETED (Blue highlight)

COMMONWEALTH ENGINEERS, INC.
 164 N. Main St.
 Crown Point, IN 46307
 (219) 900-5177

7255 Company Dr.
 Indianapolis, IN 46237
 (317) 888-1177

5624 Calowater Rd.
 Fort Wayne, IN 46855
 (260) 484-3223

420 NW 5th St, 201
 Evansville, IN 47709
 (812) 474-1177

SARAH E. PRZIO
 No. 11900794
 STATE OF INDIANA
 PROFESSIONAL ENGINEER

Sarah E. Przio
 Signature

8-3-2021
 Date

**TOWN OF LAPEL
 MADISON COUNTY, INDIANA
 WATER UTILITY
 IMPROVEMENTS PROJECT
 DIVISION "B" - DISTRIBUTION
 SYSTEM IMPROVEMENTS**

© 2020 BY COMMONWEALTH ENGINEERS, INC. ALL RIGHTS RESERVED. REPRODUCTION BY ANY METHOD IN WHOLE OR IN PART WITHOUT PERMISSION IS PROHIBITED.

Indiana 811
 Know what's below. Call before you dig.
 OR 1-800-382-5544
 (IT'S THE LAW)

No.	Submitted / Revision	By	Date

Designed By: SEP	Drawn By: NMB	Checked By: RMB
Issue Date: 8/3/2021	Project No: W20074	Scale: AS SHOWN

OVERALL VALVE AND HYDRANT REPLACEMENT MAP